

LEGEND

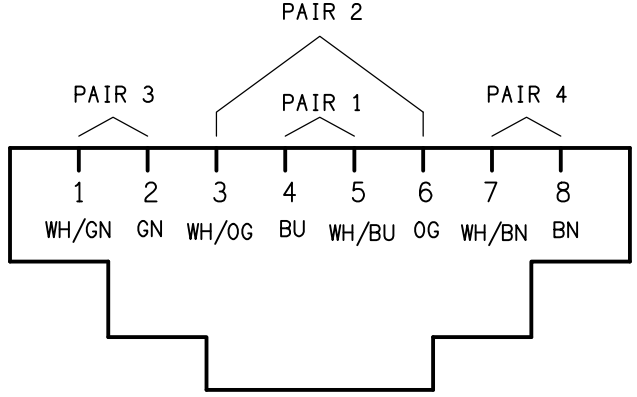
	ELECTRICAL SERVICES SWITCHBOARD.
	SWITCHBOARD / CONTROL PANEL NOT PROVIDED AS PART OF THE ELECTRICAL SUBCONTRACT.
	SINGLE POWER OUTLET.
	DOUBLE POWER OUTLET.
	SPECIAL PURPOSE POWER OUTLET.
	CABLE ACCESS, TYPE AS NOTED.
	SINGLE PHASE ISOLATOR.
	THREE PHASE ISOLATOR.
	JUNCTION BOX AS NOTED.
	ELECTRICAL CABLE TRAY, TYPE AS NOTED.
	CONDUIT ROUTE.
	x DENOTES CONDUIT TYPE.
	ELECTRICAL PIT, TYPE AS NOTED.
	HAND DRYER CONNECTION.
	EMERGENCY POWER SHUT OFF.
	LIGHTING PRESENCE DETECTOR SWITCH.
	ONE-WAY LIGHT SWITCH.
	ONE-WAY DIMMER LIGHT SWITCH.
	TWO-WAY LIGHT SWITCH.
	LIGHTING SWITCHPANEL, TYPE x.
	CIRCUIT LINE.
	SWITCH LINE.
	POWER CIRCUIT DESIGNATION. DENOTES DB AND CIRCUIT.
	ELECTRICAL EQUIPMENT AS NOTED.
	OUTLET MOUNTED WITHIN RECESS KIT.
	CAT-6 UTP RJ45 COMMUNICATIONS OUTLET.
	CAT-6A STP RJ45 COMMUNICATIONS OUTLET.
	FIRE INDICATOR PANEL.
	REFER TO DETAIL NOTED FOR THE AREA SHOWN HATCHED. ADDITIONAL OUTLETS & FITTINGS MAY BE SHOWN ON DETAIL.
	GAS CONTROL POWER SUPPLY.
	FUSE.
	SINGLE PHASE.
	THREE PHASE.
	CURRENT TRANSFORMER C/W REMOVABLE LINK.
	FUSE LINK.
	COMBINED FUSE SWITCH.
	CIRCUIT BREAKER.
	ISOLATOR.
	RESIDUAL CURRENT DEVICE.
	CONTACTOR - NORMALLY OPEN.
	CONTACTOR - NORMALLY CLOSED.

LEGEND

	RETAIL METER.
	PRIVATE MULTI FUNCTION METER.
	SOLAR NETWORK PROTECTION CTs.
	SOLAR NETWORK PROTECTION SMART METER (WIRELESS).
	SOLAR NETWORK PROTECTION WIRELESS TRANSCEIVER.
	SOLAR NETWORK PROTECTION GRID SIGNALLING DEVICE.
	SOLAR NETWORK PROTECTION RELAY WIRELESS.
	MANUAL TRANSFER SWITCH.
	E1: RECESSED LED EMERGENCY LIGHT, WHITE.
	E2: CUSTOM SURFACE CAN MOUNTED LED EMERGENCY LIGHT, BLACK.
	E3: ACCOUSTIC PANEL RECESSED LED EMERGENCY LIGHT, WHITE.
	E4: SURFACE LED EMERGENCY LIGHT, WHITE.
	E5: RECESSED LED EMERGENCY LIGHT, BLACK.
	EX: EMERGENCY LED EXIT LIGHT, WHITE.
	Lx: LIGHT FITTING C/W NON-MAINTAINED EMERGENCY BATTERY PACK. TYPE AS NOTED.
	L1: SURFACE TUBE LIGHT, CUSTOM DROP LENGTH.
	L2: ROD SUSPENDED EXTRUSION LIGHT, LENGTH AS NOTED.
	L3: ROD SUSPENDED EXTRUSION LIGHT, 1000 LONG.
	L4: ROD SUSPENDED EXTRUSION LIGHT, 1000 LONG.
	L5: SURFACE EXTRUSION LIGHT, 2000 LONG.
	L6: RECESSED DOWNLIGHT.
	L7: SURFACE EXTRUSION LIGHT, 5000 LONG.
	L8: 600 x 600 SURFACE MOUNTED FLAT PLATE FITTING.
	L9: 300 x 1200 SURFACE MOUNTED FLAT PLATE FITTING.
	L10: 600 x 600 SURFACE MOUNTED FLAT PLATE FITTING, DIMMABLE.
	L11: RECESSED DOWNLIGHT.
	L12: 600 x 600 RECESSED FLAT PLATE FITTING.
	L13: RECESSED DOWNLIGHT.
	L14: RECESSED DOWNLIGHT.
	L15: 1200 LONG SURFACE IP65 BATTEN C/W PRESENCE SENSOR.
	L16: 600 LONG SURFACE IP65 BATTEN.
	L17: RECESSED DOWNLIGHT.
	L18: SURFACE DOWNLIGHT.
	L19: SURFACE DARK ROOM SAFE LIGHT.
	L20: WALL MOUNTED DARK ROOM SAFE LIGHT.
	L21: 1200 LONG SURFACE IP65 BATTEN.
	L22: 6m HIGH POLE WITH TWO ADJUSTABLE IP65 LIGHT FITTINGS.
	L23: WALL MOUNTED AT RL 28.200 ADJUSTABLE IP65 FLOOD LIGHT.
	L24: JOINERY LED STRIP LIGHT.
	L25: CEILING FEATURE RECESSED LED EXTRUSION.
	L26: JOINERY RECESSED DOWNLIGHT.
	L27: RECESSED DOWNLIGHT, BLACK.

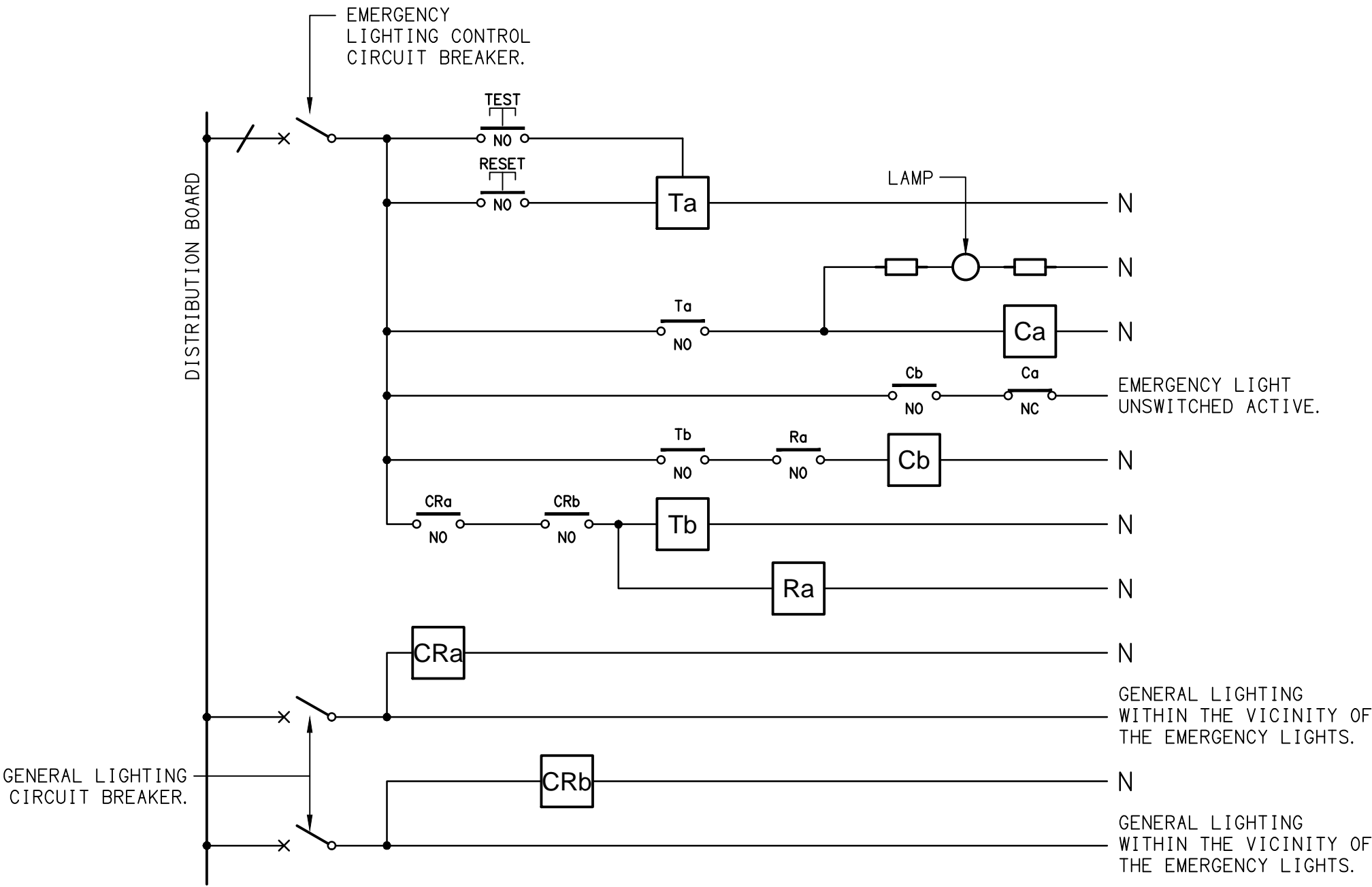
EQUIPMENT:

TEST – TEST PUSH BUTTON MOUNTED ON THE DISTRIBUTION BOARD ESCUTCHEON.  
RESET – RESET PUSH BUTTON MOUNTED ON THE DISTRIBUTION BOARD ESCUTCHEON.  
LAMP – AMBER TEST INDICATING LAMP MOUNTED ON THE DISTRIBUTION BOARD ESCUTCHEON.  
Ta – ADJUSTABLE 0-3 HOUR TIMED RELAY.  
Tb – 15 MINUTE RUN-ON TIMER TO OPERATE UPON THE RETURN OF MAINS POWER.  
Cx – CONTACTOR x.  
CRx – CONTROL RELAY x.  
Rx – RELAY x.



SCHEMATIC

RJ45 PINOUT CONFIGURATION  
NOT TO SCALE

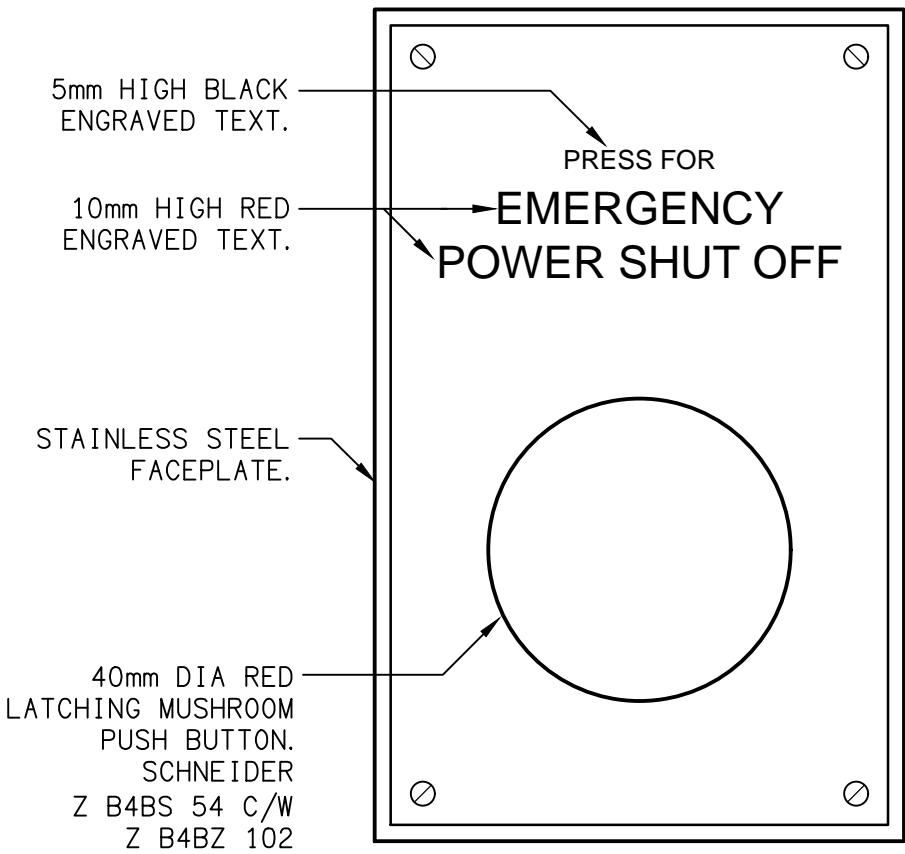


NOTES

- THE EMERGENCY LIGHT UNSWITCHED ACTIVE / GENERAL LIGHTING SWITCHED ACTIVE CIRCUIT ARRANGEMENT AND CONTROL IS TYPICAL FOR ALL CIRCUITS SUPPLYING EMERGENCY LIGHTS.
- PROVIDE ADDITIONAL CONTROL RELAYS (CRx) CONFIGURED AS PER CRa AND CRb FOR ALL ADDITIONAL LIGHTING CIRCUITS THAT SUPPLY LIGHTS IN THE VICINITY OF THE EMERGENCY LIGHTS.

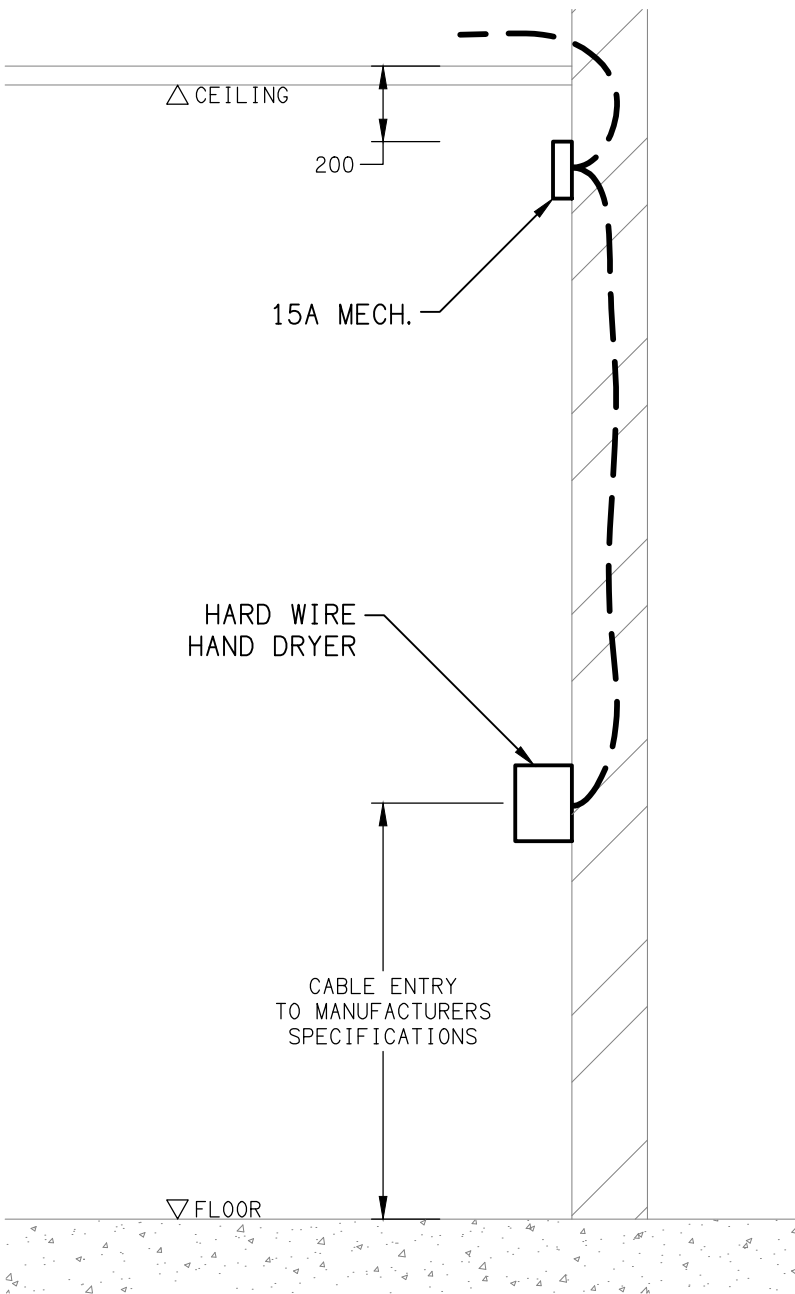
SCHEMATIC

EMERGENCY LIGHTING  
NOT TO SCALE



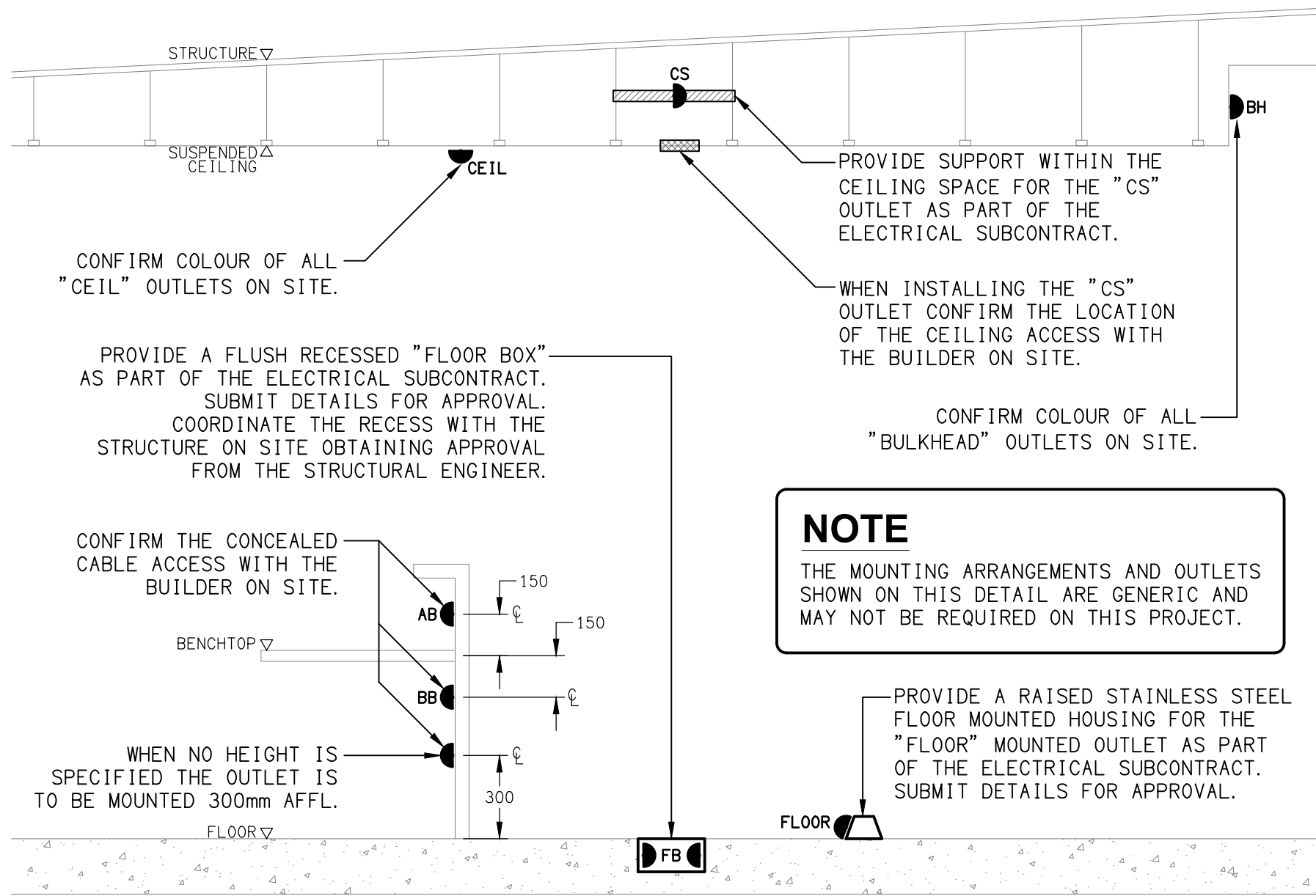
DETAIL

EMERGENCY POWER SHUT OFF (ESO)  
NOT TO SCALE



DETAIL

HAND DRYER CONNECTION  
NOT TO SCALE



DETAIL

TYPICAL OUTLET MOUNTINGS  
NOT TO SCALE

ELECTRICAL DESIGN GROUP BRISBANE PTY LTD ACN 092 710 793  TRADING AS: ELECTRICAL DESIGN GROUP	THE COPYRIGHT OF THIS DRAWING REMAINS THE PROPERTY OF THE ELECTRICAL DESIGN GROUP.  USE FIGURED DIMENSIONS IN PREFERENCE TO SCALE.  ALL DIMENSIONS TO BE VERIFIED ONSITE.	<b>ELECTRICAL DESIGN GROUP</b> ELECTRICAL BUILDING SERVICES CONSULTANTS BRISBANE GOLD COAST  P.O.Box 15, Sherwood Q.4075 Phone: (07) 3278 4375 Email: brisbane@edg.net.au Web: www.edg.net.au	PROJECT: <b>KINGS CHRISTIAN COLLEGE CHAMBERS FLAT, MIDDLE SCHOOL CHA10</b>  38-112 ANZAC AVENUE, CHAMBERS FLAT	G CONSTRUCTION 11/08/2025 REV: DESCRIPTION: DATE:	
				DRAWING: <b>ELECTRICAL SERVICES LEGEND &amp; DETAILS</b>  SCALE: NOT TO SCALE AT A1	PROJECT NO: <b>C3232a</b> DRAWING NO: <b>E01</b> REVISION: <b>G</b>